

GERALDILUKWE



1-GOV.NET

IMPLEMENTING INFRASTRUCTURE FOR EFFECTIVE E-
GOVERNMENT SERVICES IN NIGERIA

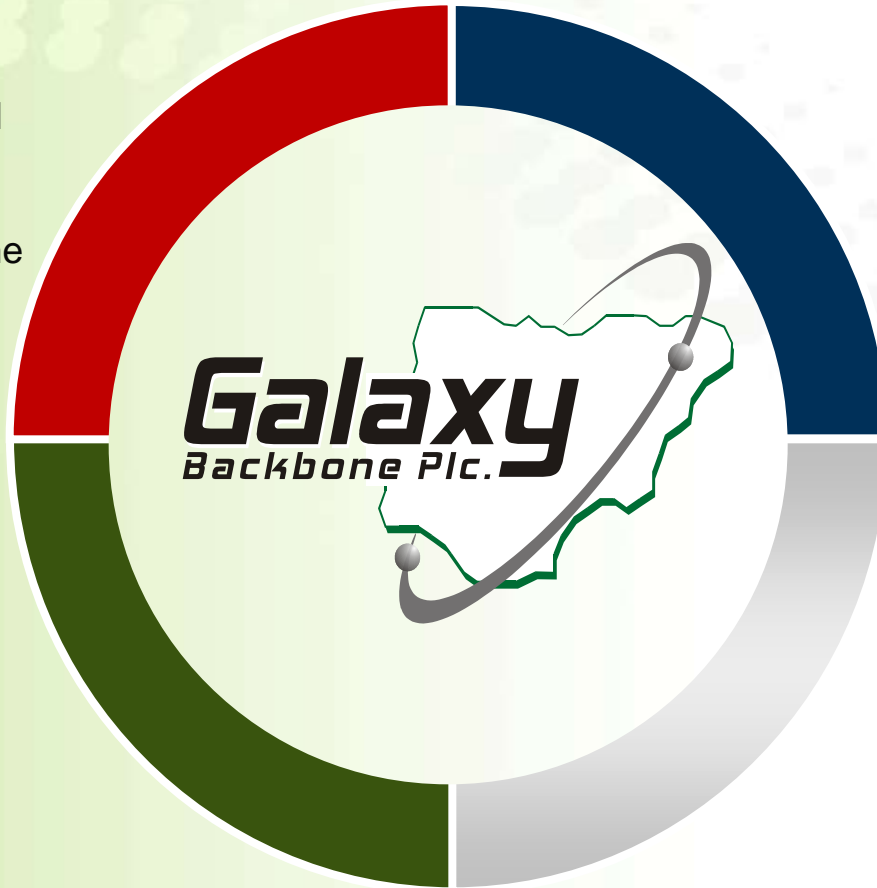
GALAXY BACKBONE



ABOUT GALAXY BACKBONE LIMITED

STRUCTURE

Established by the Federal Government in 2006.
Registered as Limited Liability Company under the CAMA



VISION

To be the leading provider of reliable ICT services enabler of digital inclusion in Nigeria and Africa

MANDATE

Mandated to provide network connectivity infrastructure and transversal services to MDAs of the FG

MISSION

Galaxy Backbone drives national development through the provision of pervasive ICT infrastructure and services to public institutions, underserve communities and other stakeholders



GALAXY BACKBONE



MANDATE

1. Be the provider of ICT infrastructure , applications and services to *all* Federal Government MDAs and institutions, e.g. manage Data Centers, Directory Services, Information Repositories, IP Telephony, Messaging and Collaboration Services, Networks and Other Services; including but not limited to services delivered on the shared infrastructure platform



2. Provide guidelines for acceptable usage of ICT infrastructure (AUP), applications and services across Federal Government MDAs and Institutions

3. Provide technical resource support to the Ministry of Communication Technology and also contribute to thought leadership on Government ICT policies & initiatives



1-GOV.NET

SCOPE OF THE PLATFORM



Network Infrastructure

- 5 VSAT Hubs
- 4,000 Locations Connected Nationwide
- Over 400 MDA Customers
- 8,000 nodes on Managed LANs
- 400 schools, 200 Primary Healthcare Centers
- 700km of optical fiber in Abuja
- Over 1.2Gbps of Internet Access deployed to FGN

Data Center Infrastructure



- 125 Servers
- 95 MDA Customers
- 300 Terabytes of Storage
- Over 60,000 official mail boxes

Value Adds



- Executive Video Conferencing
- Voice Over IP
- Certified Information Security Management
- Document Management and Process Automation

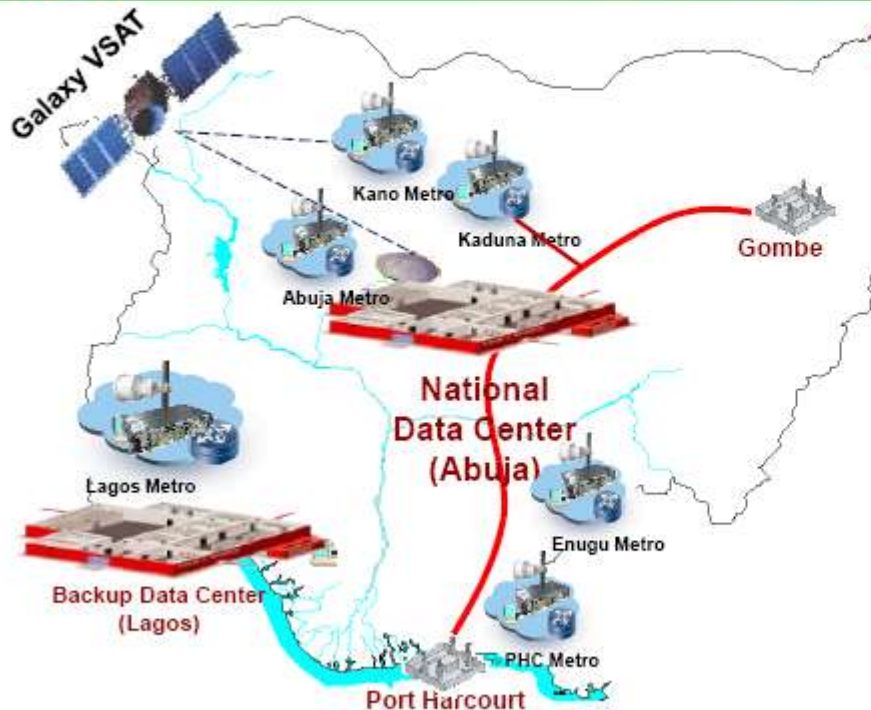


1-GOV.NET

EXPANSION PLANS



NICTIB - All Service Backbone Network



- Optical Fibre Cable Backbone network.
- DWDM/SDH Transmission Nodes.
- Submarine Landing Point (Equipment).
- National Datacenter.
- Backup Datacenter.
- MAN Network
- Ethernet LAN Equipment.
- Using Galaxy VSAT for remote sites access.

- **All service broadband network:** 1500Km Optical Fibre Cable Backbone network covering the Federal Territory.



1-GOV.NET

SERVICES PORTFOLIO



Managed Network Services



Managed Data Center Services



Messaging & Collaboration Services



Professional Services



Co-location Services



Online Brokerage Services



Government Records Management Services



1-GOV.NET



EXAMPLES OF 1-GOV.NET ENABLED PUBLIC SERVICES



- Over 1 million international passengers were processed through Nigeria's airports in 2012
- **1-GOV.net** infrastructure provides **real-time** connectivity between border control points and a central processing server



- The Nigerian Government provides bridging assistance for the transportation of petroleum products to maintain uniform prices across the country
- Over 1,000 trucks are processed daily. All transactions are processed in **real time** over **1-GOV.net**



- The Federal Road Safety Commission is implementing a new biometric drivers licensing scheme nationwide targeting over 20 million drivers by 30th September 2013
- **1-GOV.net** infrastructure is supporting **real-time** driver registration and records management



1-GOV.NET

HOW DID WE GET HERE?



High Level Leadership

Committee to set up Galaxy was chaired by the President



Clear Policy Direction

Galaxy's role backed by government-wide policy directive



Organization Culture

Established as a performance driven company like in the private sector.



The Right People

Recruiting the right balance of competencies to drive change



Passion and Hardwork

Driving change is hard. Sometimes it comes down to who wants it more

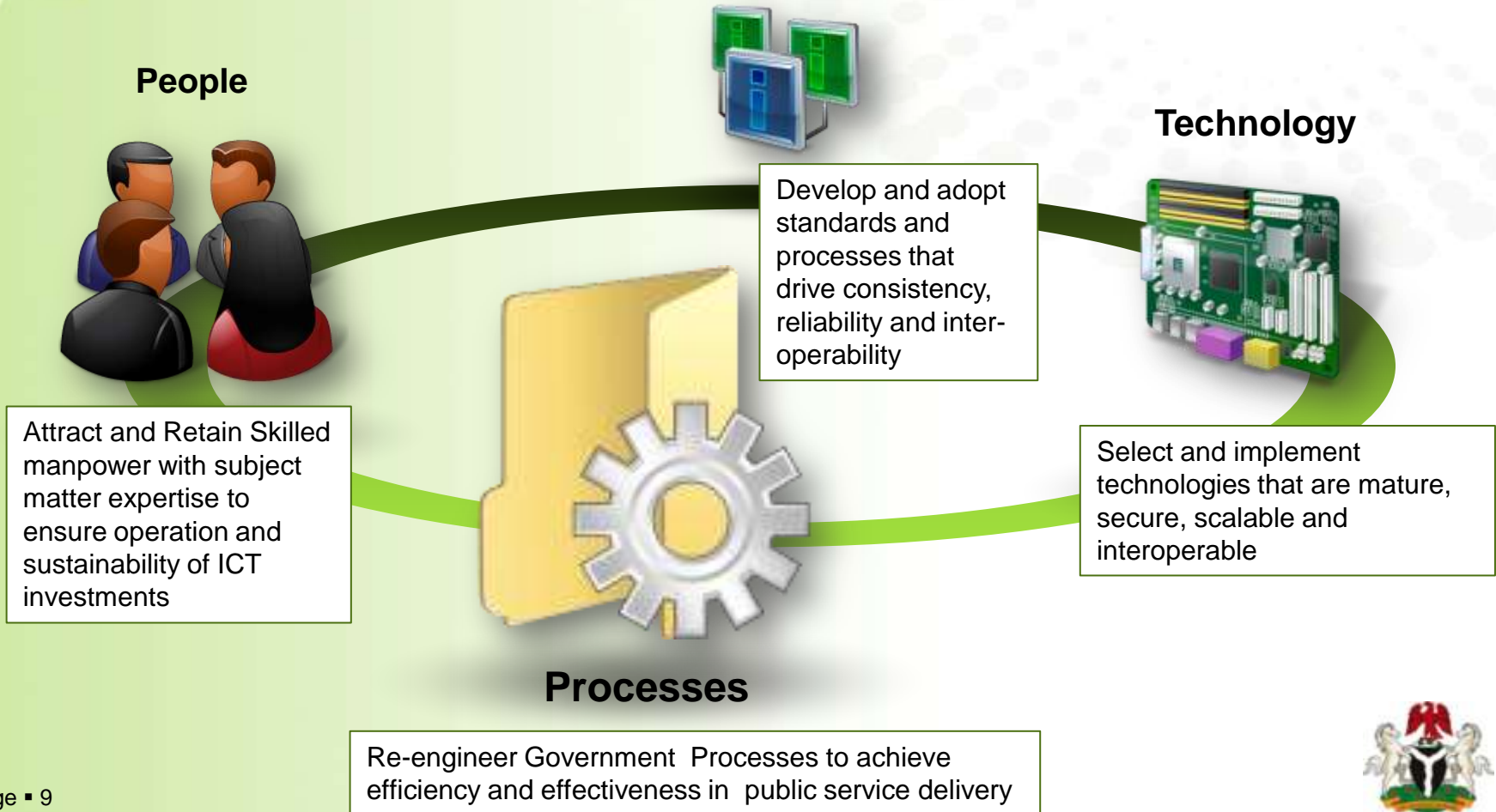


1-GOV.NET

STRATEGIC APPROACH



Government-wide Enterprise Architecture



1-GOV.NET



WHAT HAVE BEEN OUR CHALLENGES?



Inadequate Funding

A strong mandate backed by policy circular has not translated into adequate funding for Galaxy



Low Technical Capacity

Absence of Technical ICT Capacity in most ministries, resulting in poor ICT management and alignment with core MDA objectives



Resistance to Change

Perceptions that ICT is not that critical to Government and resistance to a model of ICT procurement that diffuses their power to procure



Unstable Power Supply

Power outages are a common problem in Nigeria. This affects the availability and the cost of ICT infrastructure services.

