

ICT Access in Rural Communities

I-can, You-can, We-can, Afri-can!

CTO Forum, Nairobi, Kenya

17 September 2015

Gertjan van Stam

Scientific and Industrial Research
Development Centre (SIRDC)
Zimbabwe



Introduction

- Gertjan van Stam, gertjan@vanstam.net
- 2000-2003: rural Zimbabwe, 2003-2012: rural Zambia, 2013-2015: urban/rural Zimbabwe
- Affiliated with
 - Scientific and Industrial Research and Development Centre (SIRDC), Harare, Zimbabwe, sirdc.ac.zw
 - Macha Works, Zambia, machaworks.org
 - Tilburg University, Netherlands, tilburguniversity.edu
 - IEEE, USA, ieee.org



Scientific and Industrial Research and Development Centre (SIRDC)

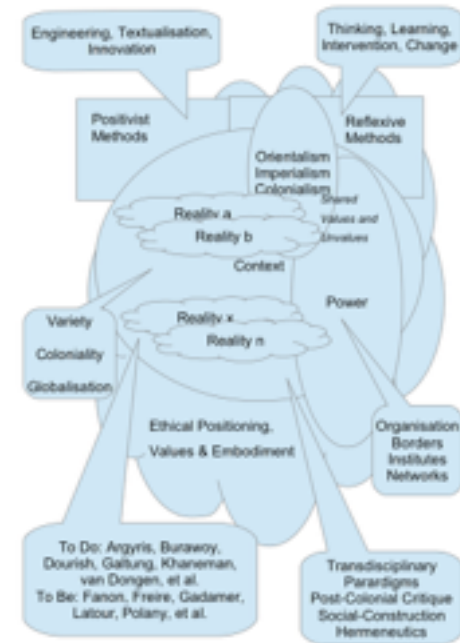
- Zimbabwe's leading Technology Centre
- Established by Government of Zimbabwe during 1993, grounded in Research Act 1986
- Focus on strategic research and development for all sectors of Zimbabwe
- Tasked to provide Zimbabwe and the region with technology for sustainable progress



Research Method

Transdisciplinary Participatory Action Research involving

- participative observation
- in-depth interviewing
- narrative analysis
- reflexive interaction



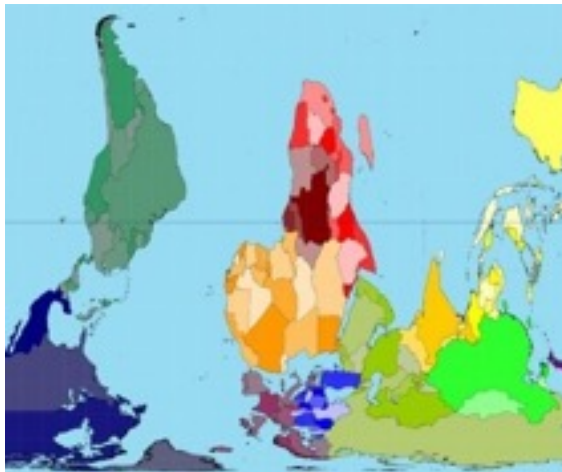
Framing of the Discourse



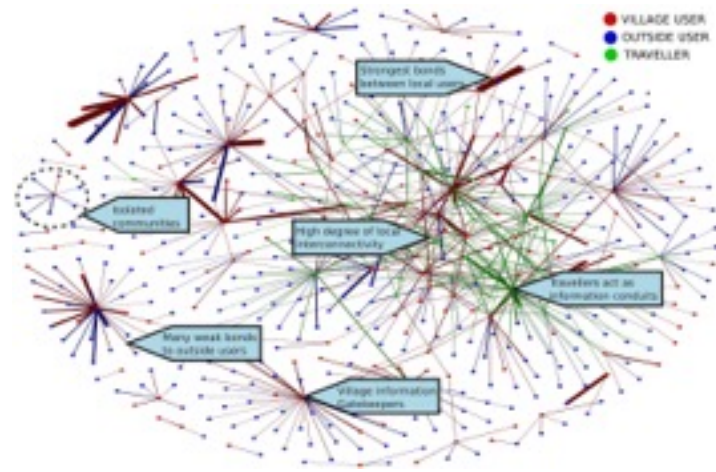
Exogenous or Indigenous Perspective?



Conditioned or Open Minded?



Local or Foreign Orientation?



Local or Foreign Conversation?



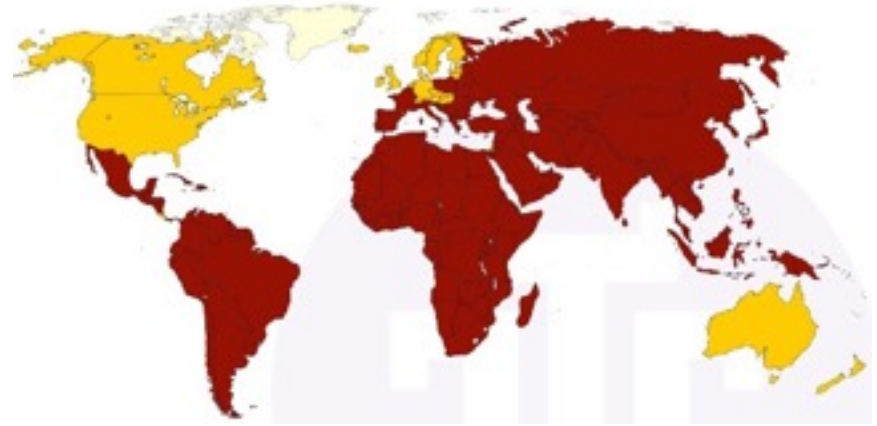
Individualistic vs. Collectivistic Societies

Individualistic (People)

- Independent Thought
- and Action

Collectivistic (Peoples)

- ‘in Africa, Man is part and parcel of the group’
- Interdependent Thought
- Identity and Morality of individual inextricably bound by relationships with others in society



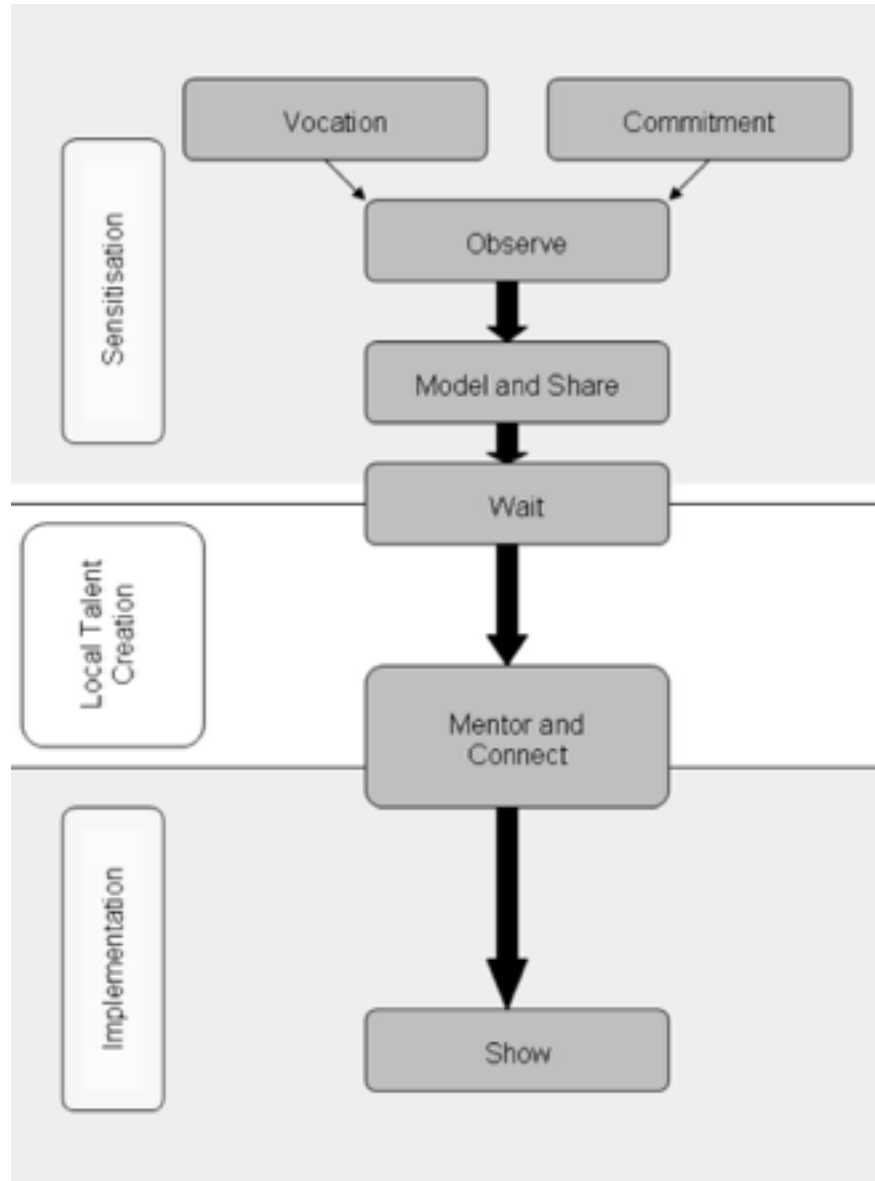


Strength in Communities

- Local Talent drives local progress
- ICT access allows a person to ‘be someone’
- Community deposits amplify local agency
- Supporting aspects
 - real attention and taking time
 - local training by local persons
 - local content generation
 - holistic development creating jobs



Macha Works Model



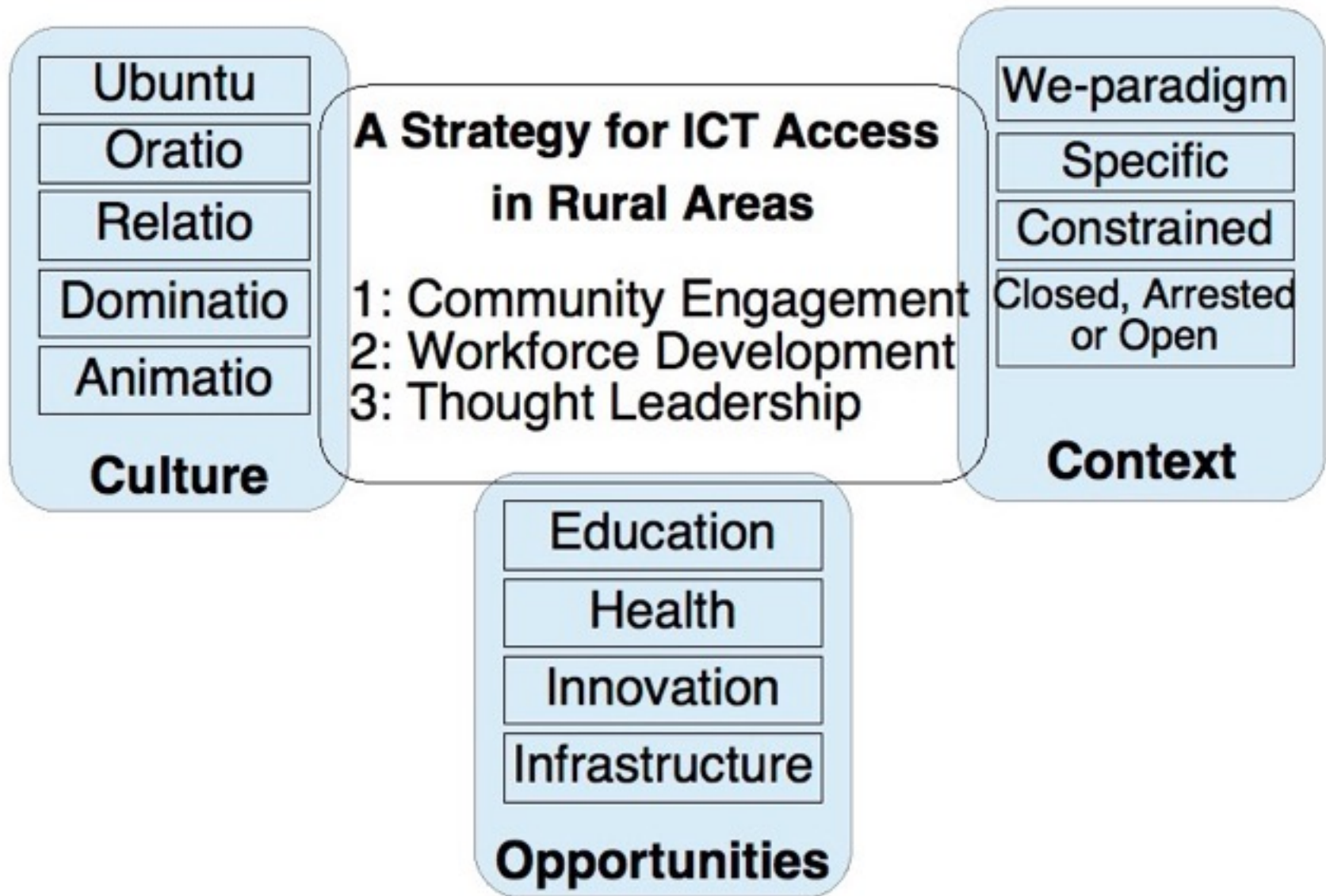
SA207 JNB to IAD, July'12



Do not
store any
baggage
under seat.

SA207 JNB to IAD, July'12





Van Stam, G. (2013). A Strategy to make ICT accessible in rural Zambia: A case study of Macha. NMMU: Port Elizabeth



Summary: Lessons Learned in rural Zambia and Zimbabwe

Ensure Community Engagement from the start

- Align with local Context and Culture
- Inclusive of all Stakeholders

Develop local and national Workforce

- Recognise and support Local Talent/Heroes
- Empower Early Adopters
- Embed in Respectful and Equal partnerships

Engage (Thought) Leaders

- Community shares stories with other communities
- Review underlying theories at national Academy



Afri-can!

Let's Research the African Expression of ICT Access

Thank you very much.

Gertjan van Stam
gertjan@vanstam.net

SIRDC, Zimbabwe
Macha Works, Zambia